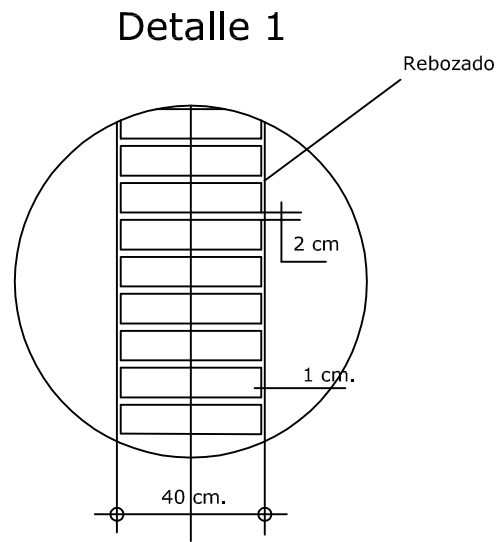
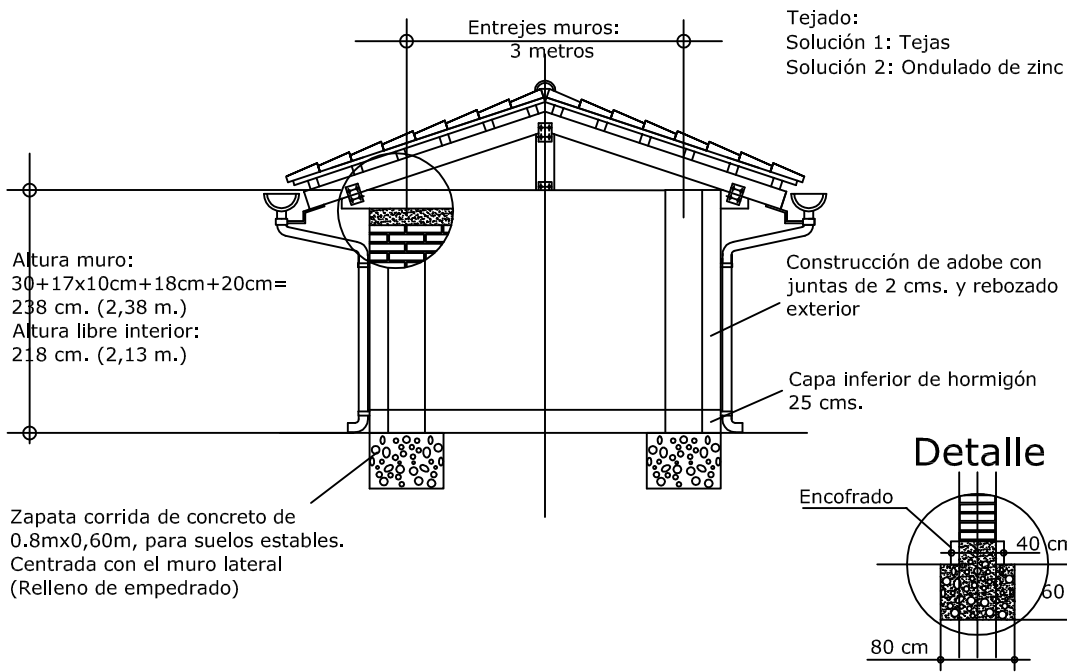
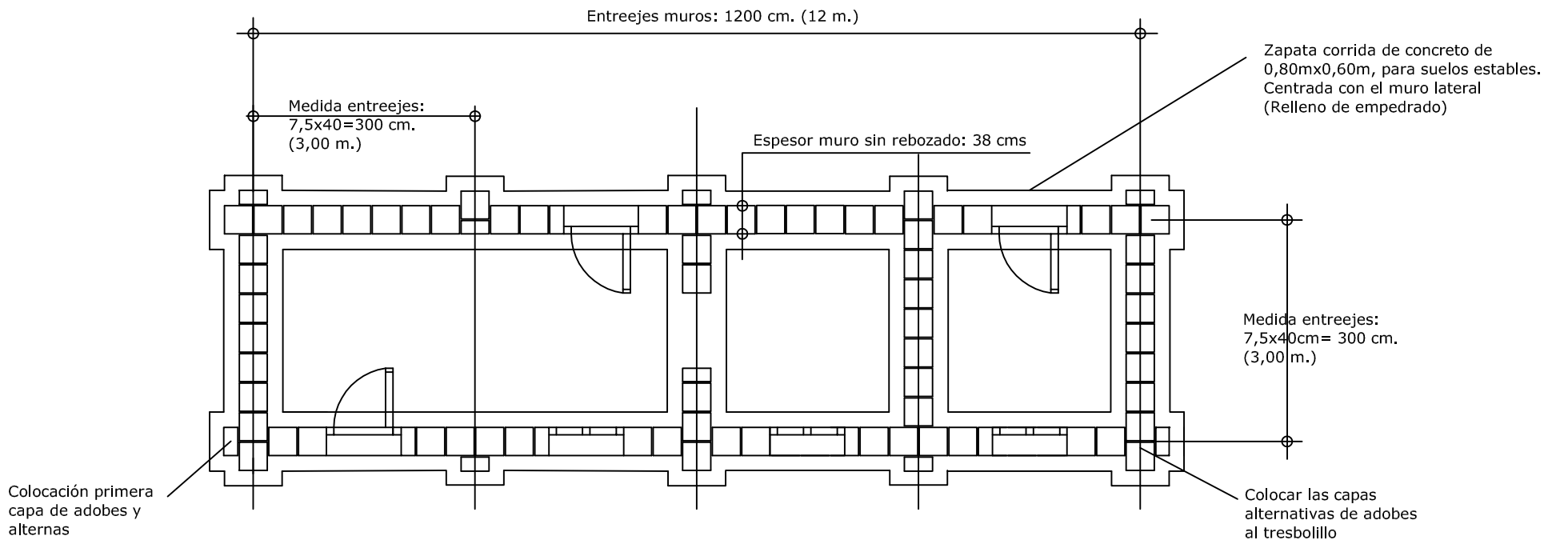
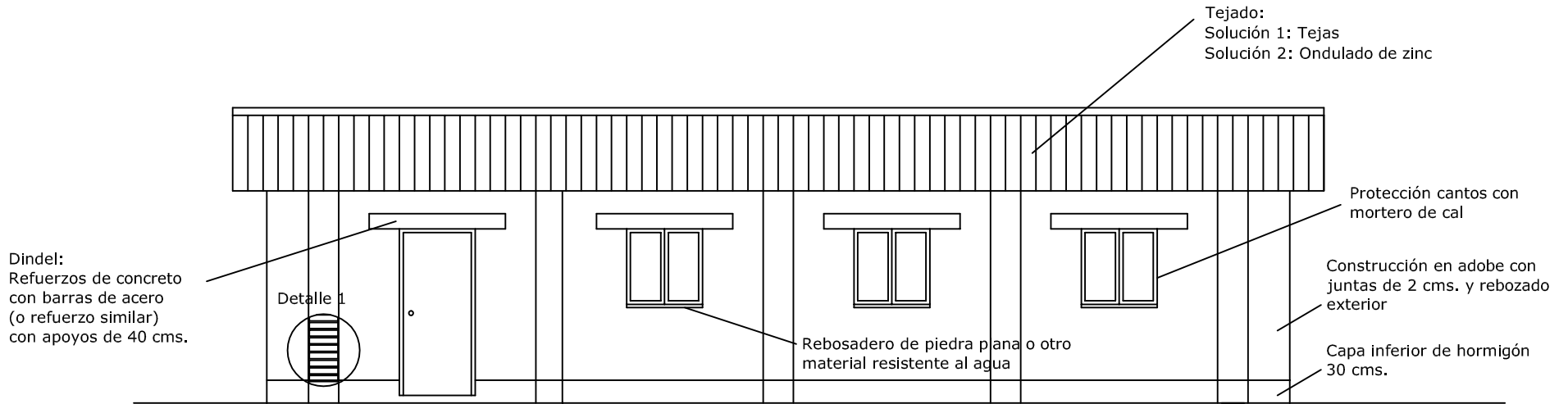
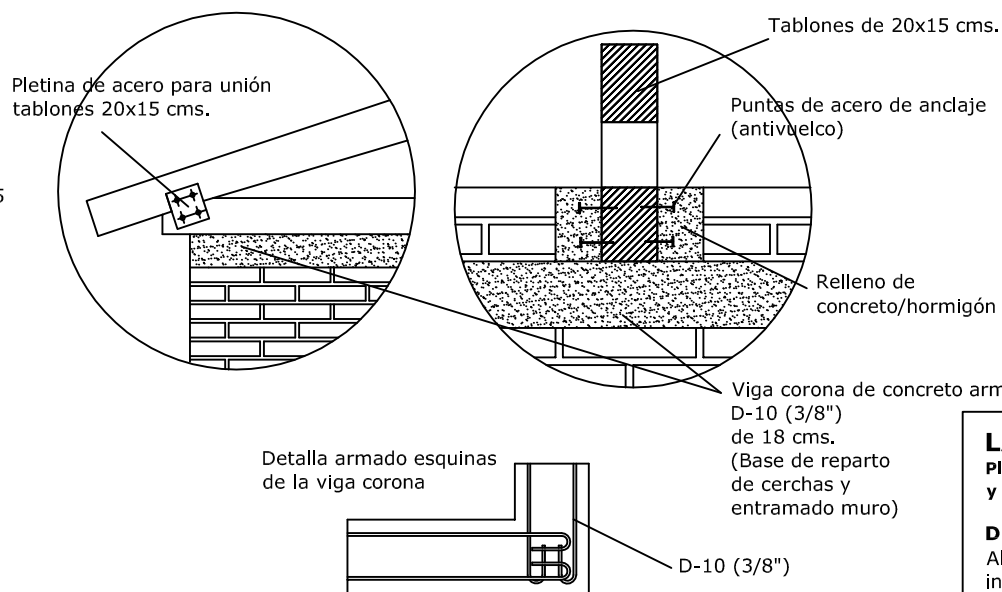
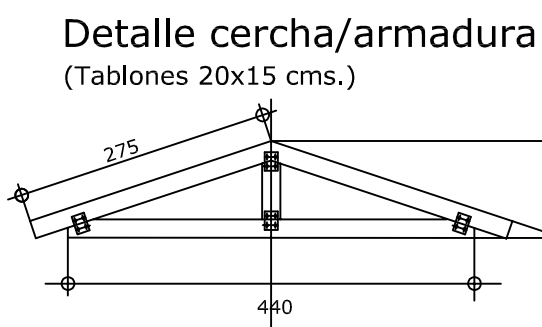


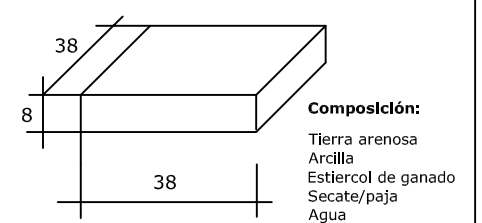
La casa de adobe



Detalle apoyo cercha/armadura



Detalle adobe



LA CASA CONSTRUIDA EN ADOBES
Plano tomado de GRUDESA (El Arenal - Nicaragua) y las recomendaciones técnicas de la UNI de Lima

Dibujo:
Alfonso Cama (Comité Oscar Romero Tarragona), ingeniero